



Building Rank

# COMPANY PROFILE

With Building Rank , We Guarantee you a Safe Choice

Presented By: Building Rank

[www.buildingranks.com](http://www.buildingranks.com)

# ABOUT US

**Building Rank** is a leading regional building inspection company, operating in Saudi Arabia, the UAE, Jordan, Iraq, Egypt, Libya, and Syria. Using global standards, it provides advanced inspection services for residential, commercial, and industrial buildings. The company's expert engineering team uses the latest technology to ensure comprehensive inspections and due diligence assessments, protecting investors and property buyers from risks related to construction quality and regulatory compliance.

**Building Rank** offers specialized inspections, including checks for mold, moisture, leaks, electrical and HVAC systems, and structural assessments. Their detailed reports evaluate building quality, identify defects, and provide recommendations for improvements with cost estimates, enhancing the long-term performance and sustainability of buildings.

With a focus on quality and professionalism, **Building Rank** aims to deliver reliable, innovative services that ensure customer satisfaction.



## BUILDING / PROPERTY / FACILITY CONDITION ASSESSMENT

**Comprehensive Inspection** Ensure the safety of your investment when buying or building, with our distinguished comprehensive inspection service whether it's a villa, apartment, or commercial or industrial building, new or old.

**Thorough and Complete Inspection:** We inspect **over 750** precise points covering all aspects of the property:

- Structural and architectural elements
- Interior and exterior finishes
- Roof condition and waterproofing
- Exterior facades
- Site and surrounding environment evaluation
- Electrical components and systems
- Alarm, surveillance, and fire safety systems
- Security and safety systems
- Mechanical systems (plumbing, drainage, water systems, HVAC)



# Professional Engineering Reports:

**Building Rank** produces detailed professional reports that include:

- **Quality Rating:** Scored out of 100 with classifications (A, B, C), assessing the quality of components (Excellent - Good - Poor - Failed).
- **Detailed Results:** Inspection results for each component.
- **Lifespan Analysis:** Remaining Useful Life (RUL) and Expected Useful Life (EUL).
- **Defects and Issues:** Identifying flaws with supporting evidence from testing devices.
- **Repair Solutions:** Detailed repair methods, including costs and required materials.
- **Bill of Quantities:** Specifications and quantities of materials needed for maintenance.
- **Prioritized Repairs:** Ranking repairs by importance.
- **Engineers' Recommendations:** Expert advice on the expected longevity of the property.
- **Report Summary:** Comprehensive overview of findings.

## Expert Teams

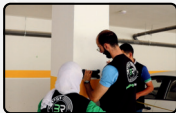
Our inspections are conducted by three specialized engineers using the latest technologies and tools, ensuring precision and comprehensive analysis.



## STRUCTURAL CONDITION ASSESSMENT

We provide specialized structural inspection services to ensure the safety, durability, and performance of buildings. Our comprehensive assessment aims to identify and address structural issues, such as cracks, settlement, spalling, and rusting of reinforcement steel, whether for adding floors, redesigning, or maintenance.

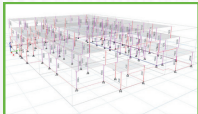
- **Foundation and Structural Framework Inspection and Assessment:** Comprehensive inspection and evaluation of the safety of the foundation and structural framework.
- **Concrete and Reinforcement Steel Inspection:** Measurement of concrete strength and reinforcement steel corrosion assessment.
- **Material Strength and Quality Evaluation:** Assessment of the strength and quality of building materials to ensure compliance with required standards.
- **Structural Inspection for Vertical Expansion:** Structural analysis for vertical expansion purposes, such as adding additional floors.
- **Structural Inspection for Redesign and Demolition of Parts of the Building:** Detailed structural evaluation for redesigning or demolishing parts of the building.





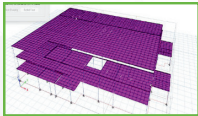
## Precision and Professionalism in Every Inspection

- **Specialized Team:** A team of specialized structural engineers brings extensive expertise to every project, utilizing the latest software.
- **Advanced Techniques and Tools:** The use of cutting-edge tools and equipment ensures accurate and reliable structural assessments.
- **Comprehensive Reports:** We provide detailed reports documenting inspection results, recommendations, necessary corrective actions, and their costs.



## Report Details: In-Depth and Actionable Analysis

- **Accurate Assessment:** Our reports include a precise evaluation of every aspect of the structure, from the foundation to all components and elements.
- **Improvement Recommendations:** We offer suggestions for necessary improvements to enhance structural performance and safety.
- **Inspection Details:** Specific details about the inspection process and methods used in the evaluation.
- **Action Plan:** Clear and actionable steps for any required corrective actions, redesign, maintenance, and reinforcement.



## Ground Penetrating Radar (GPR) Technology for Accurate and Comprehensive Assessment

At **Building Rank**, we offer Ground Penetrating Radar (GPR) services to provide a precise and comprehensive analysis of a building's infrastructure and its surroundings. Utilizing the latest technologies and advanced equipment, we ensure a holistic evaluation that helps you identify potential issues before they escalate.

### What is Ground Penetrating Radar (GPR)?

Ground Penetrating Radar (GPR) is an advanced technique that uses radar waves to penetrate floors, walls, and concrete to depths of up to 7 meters, allowing for the detection of hidden elements of any type. This technology provides a thorough and accurate view that aids in making informed decisions regarding maintenance, repairs, and risk assessment.



## Our GPR Services

- **Location and Density of Reinforcement Steel and Corrosion Detection:**  
Identifying the locations and density of reinforcement steel within concrete and assessing the extent of corrosion.
- **Detection of Buried Pipes and Cables:**  
Accurately locating buried pipes and cables to prevent damage during construction work.
- **Soil and Construction Site Assessment:**  
Detecting voids, pockets, and weak spots in the soil.
- **Concrete Condition Assessment:**  
Detailed analysis of the condition of concrete, assessing its strength and integrity.
- **Water Leak Detection:**  
Identifying sources of water leaks to prevent further damage.
- **Crack and Joint Detection in Foundations:**  
Locating cracks and joints in foundations to ensure the safety of the infrastructure.
- **Floor Defect Detection:**  
Discovering hidden defects in floors and understanding their causes.
- **Detection of Buried Elements in Walls:**  
Identifying buried elements such as pipes and cables within walls.
- **Roof Condition Assessment:**  
A comprehensive examination of roof conditions to identify any potential issues.
- **Detection of Previous Structural Modifications:**  
Identifying any prior structural modifications that may affect the safety of the building.





## Precision and Professionalism

- **Modern Techniques:** Utilizing the latest technologies and equipment to ensure the highest accuracy in results.
- **Specialized Engineers:** A team of highly experienced engineers specializing in ground penetrating radar.
- **Detailed Reports:** Providing comprehensive reports that detail inspection results along with recommendations for repairs and improvements.

### Generate a comprehensive report that includes:

- 2D and 3D maps detailing subsurface structures.
- Identification of utilities, voids, and potential obstacles.
- Recommendations for any necessary corrective actions based on the findings.



## Mold & Leak Assessment Service

Our services are designed to identify issues related to moisture, leaks, mold growth, and unjustified increases in water bills, ensuring the protection of buildings.

### Advanced Tools and Techniques:

- A variety of modern devices and technologies.
- Accurate identification of the root causes of the problem.
- A specialized team of engineers utilizing the latest techniques for comprehensive inspections.

### Detailed Repair Recommendations Include:

- Required materials.
- Best repair methods (step-by-step repair procedures).
- Cost estimates.



## Power Condition Assessment Service

We provide specialized inspection services for electrical systems and components to ensure safety and optimal performance. Our inspections are designed to evaluate electrical systems and verify their efficiency and safety using the latest testing equipment.

### Comprehensive Electrical Systems and Components Inspection:

- Evaluate the performance of electrical systems according to international standards.
- Inspect main and sub-electrical panels.
- Test wires and conductors for safety.
- Analyze energy consumption and load distribution.
- Thermal imaging inspections.
- Grounding system testing.

### Safety and Security Analysis:

- Assess electrical protection systems and identify potential hazards.
- Ensure installations comply with safety requirements.

### Detailed and Professional Reports:

- Document inspection results and required recommendations.
- Identify necessary repairs and provide steps for performance improvement, including labor and material cost estimates.



## Quality Control & Quality Assurance

### Ensuring Quality at Every Stage of Construction

Building Rank offers specialized quality control services to ensure your project meets the highest standards and specifications. We provide peace of mind through meticulous and professional monitoring of every stage of construction as your "technical representative."

### Quality Control at Every Construction Stage

- **Continuous Monitoring and Inspection:** We monitor and inspect all construction phases to ensure quality in execution.
- **Standards Verification:** We verify compliance with required standards and specifications at every step.
- **Regular Reports:** Periodic reports are sent to the owner, detailing inspection findings and quality compliance.



### Precision and Professionalism

- **Specialized Team:** A dedicated team of engineers oversees project execution to ensure full compliance with quality standards.
- **Advanced Tools and Techniques:** Utilizing the latest tools, technologies, and software for inspection and monitoring ensures optimal results.
- **Standard and Specification Assurance:** We guarantee your project is executed according to the highest quality standards and specifications.
- **Peace of Mind:** Providing thorough and professional monitoring of every construction phase ensures peace of mind.
- **Top-Quality Project Execution:** Guaranteeing your project is executed with the highest standards of quality and professionalism.
- **Time and Effort Savings:** We save you time and effort through continuous monitoring and inspection of construction phases.

### Comprehensive and Periodic Reports

- **Accurate Assessment of Each Phase:** Reports include a detailed assessment of every construction phase.
- **Improvement Recommendations:** Providing recommendations for improvement if necessary to ensure the best possible outcomes.
- **Inspection Details:** Detailed documentation of inspection findings and quality compliance at each stage before moving to the next phase.



## Maintenance Condition Report (MCR)

- **An Essential Tool for Maintenance Needs**

The Maintenance Condition Report (MCR) is a critical tool for addressing building maintenance requirements. It provides a comprehensive and reliable assessment that aids in developing an accurate action plan to tackle current issues and anticipate future needs.

- **Maintenance Needs Assessment for Periodic Intervals (4, 6, or 8 Years)**

MCR evaluates the property's maintenance needs over a specified period, allowing for prompt action on existing issues and planning for future requirements, helping avoid costly repairs.

- **Comprehensive Assessment**

The report covers all aspects of the property, from structure to systems, providing detailed analysis to ensure no maintenance issues are overlooked.

- **Priority-Based Recommendations**

MCR prioritizes tasks based on urgency, guiding property owners on which issues to address first to reduce risks and maintain property value.

- **Cost Estimates**

MCR offers accurate cost estimates for each recommendation, making financial planning more effective and allowing for resource allocation where it's most needed.

- **Detailed Timeline and Work Specifications**

MCR includes a detailed schedule outlining quantities (BOQ), work specifications, and necessary materials for maintenance tasks, facilitating efficient work organization.

- **Actionable Insights**

The MCR provides property owners and investors with actionable insights, detailed plans, and specifications for routine maintenance and replacement schedules based on the expected useful life (RUL) of each element, ensuring effective property upkeep and economic feasibility for projects.

## Operation Cost Report (OCR)

### Comprehensive Analysis of Operating Costs to Ensure Efficiency and Effectiveness

The Operation Cost Report (OCR) provides a thorough analysis of property operating costs, ensuring financial management efficiency and effectiveness. OCR helps property owners understand their operating costs and identify opportunities to improve financial performance.

### Comprehensive Operating Cost Evaluation

OCR assesses all aspects of operating costs, from energy and water to maintenance and security, offering a complete view of ongoing expenses.

### Expense Analysis

The report carefully analyzes all operational expenses, enabling property owners to pinpoint areas where costs can be reduced and efficiency improved.

### Future Cost Projections

The report includes future cost forecasts based on current data and trends, helping in effective financial planning and avoiding unexpected expenses.



### **Improvement Recommendations**

OCR provides detailed recommendations for improving operational efficiency and reducing costs, including specific actions that can bring tangible improvements.

### **Potential Cost Estimates**

The report offers accurate cost estimates for each recommendation, allowing property owners to determine the expected returns from efficiency improvements.

### **Detailed Timeline and Work Specifications**

OCR includes a detailed timeline for implementing the proposed improvements, assisting in effective planning and coordination of work.

### **Report Benefits**

In summary, the Operation Cost Report (OCR) offers property owners a comprehensive analysis, actionable recommendations, and accurate forecasts to enhance operational efficiency and reduce expenses, ensuring effective financial management. It is also a key component of the economic feasibility study for commercial projects.





## Specialized and Comprehensive Quality Inspections

Ensuring Quality in Every Aspect of Construction and Infrastructure

At **Building Rank**, we offer a comprehensive range of specialized inspections to ensure the highest quality standards in every aspect of buildings and infrastructure. From water and thermal insulation to air and water quality, we guarantee a safe and comfortable environment.

### Specialized Inspections

- Waterproofing Inspection
- Thermal Insulation Inspection
- Material Quality Inspection
- Material Damage Assessment
- Air Quality Inspection
- Water Quality Inspection
- HVAC System Inspection
- Plumbing and Sanitary System Inspection



By implementing these specialized inspections, we help ensure that your building meets all safety and quality standards, providing peace of mind and a secure environment for occupants.

## Overview of Inspection Devices

Ensuring Quality in Every Aspect of Construction and Infrastructure

At **Building Rank**, we utilize over 70 advanced devices to ensure precise and thorough inspections in architectural, structural, electrical, and mechanical aspects.

### Architectural and Structural Inspection Devices

- **Ground Penetrating Radar (GPR):**

For subsurface scanning and detecting structural elements.

- **Crack Width & Depth Detector:**

Measures crack dimensions for structural analysis.

- **Thermal Imaging Camera:**

Detects temperature variations for insulation and leakage issues.

- **Concrete Scanner:**

Evaluate concrete integrity and embedded objects.

- **Rebar Locator:**

Locates reinforcement bars within concrete structures.

- **Digital Schmidt Hammer:**

Tests concrete surface hardness and strength.

- **Penetration Strength Tester:**

Measures material strength and penetration resistance.

- **Rebar Corrosion Detector:**

Assesses rust and corrosion levels in reinforcement steel.



## • **Electrical and Mechanical Inspection Devices**

- **Circuit Analyzer:**

Tests electrical panels for faults and efficiency.

- **Electrical Thermal Imaging Camera:**

Detects hotspots and electrical issues using infrared technology.

- **Power Quality Analyzer:**

Evaluates electrical system performance and harmonics.

- **Earth Resistance Tester:**

Measures grounding efficiency and safety.

- **Insulation Tester:**

Verifies insulation integrity to prevent leaks and hazards.

- **Moisture Meter:**

Measures moisture content in materials to detect leaks.

- **Pipe Inspection Camera:**

Visualizes pipe interiors for blockages or damage.

- **Flow Meter:**

Monitors flow rates in plumbing and HVAC systems.

- **Thermal Imaging Camera (Mechanical):**

Identifies temperature fluctuations in mechanical systems.

- **Network Cable Tester:**

Ensures the integrity of network cables.

- **Lux Meter:**

Measures lighting levels for compliance and efficiency.

- **Indoor Air Quality Tester:**

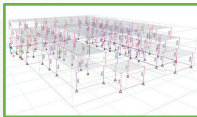
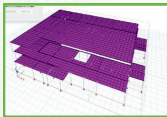
Monitors air quality for contaminants, temperature, and humidity.



## Advanced Software Solutions

- **Inspection Management Software:**  
Efficiently documents and manages inspection reports.
- **Data Analysis Software:**  
Analyzes inspection results and provides data-driven recommendations.
- **E-TABS:**  
Structural analysis software for load testing and detecting weaknesses.
- **SAFE:**  
Foundation analysis software for assessing load-bearing capacities of existing foundations.

Our cutting-edge tools and technology ensure that every aspect of your building is inspected with precision, accuracy, and professionalism.



## Global and Local Standards Followed in Inspections

At **Building Rank**, we are committed to adhering to the highest global and local standards to ensure the quality and safety of our inspection processes. Our work is based on a diverse range of international standards and local codes, covering all technical and engineering aspects of buildings and infrastructure.

- **Global Standards:**

- **ISO (International Organization for Standardization):** Standards for comprehensive quality management and operational efficiency.
- **ASTM (American Society for Testing and Materials):** Standards for material testing, including concrete, steel, and insulation.
- **BS EN (British Standards European Norms):** Construction standards ensuring quality at every stage of building projects.
- **NFPA (National Fire Protection Association):** Safety standards for fire protection and prevention.
- **IEC (International Electrotechnical Commission):** Standards for electrical and mechanical inspection and evaluation.

- **Local Codes:**

- We ensure compliance with local building codes in each country we operate in, guaranteeing full adherence to regulations related to construction, safety, and environmental requirements. These codes cover structural, architectural, electrical, and mechanical aspects, ensuring that projects meet local laws and governmental standards.

## **Benefits of Adhering to Standards**

- **Ensuring Structural Safety:** Ensuring materials and techniques conform to the highest quality standards.
- **Promoting Sustainability:** By adopting environmentally friendly practices that align with global and local regulations.
- **Enhancing Operational Efficiency:** By reducing defects and increasing the lifespan of the building.
- **Building Trust:** By providing reports based on precise and reliable standards, giving property owners and investors peace of mind.

Our commitment to following internationally recognized best practices and local regulations ensures that we deliver reliable, accurate results across all our projects.



## Kingdom of Saudi Arabia:

### **Riyadh:**

Phone: +966553099595

Email: [info.sa@buildingranks.com](mailto:info.sa@buildingranks.com)

Address: 6931 King Abdulaziz Road - Almaseef District - Riyadh 12467 - 2479 -

### **Eastern Province:**

Phone: +966550460999

Email: [info.eastern@buildingranks.com](mailto:info.eastern@buildingranks.com)

Address: Alkhobar - Aljir district - Abdurhman Alsulami st

Website: [sa.buildingranks.com](http://sa.buildingranks.com)

## United Arab Emirates:

phone: +971502470240

Email: [info-dxb@buildingranks.com](mailto:info-dxb@buildingranks.com)

Address: Dubai - Dubai Silicon Oasis - SIT Tower - Office No. 2403

Website: [www.buildingranks.com](http://www.buildingranks.com)

## The Hashemite Kingdom of Jordan:

Phone: +962777844944

Email: [info@buildingranks.com](mailto:info@buildingranks.com)

Address: Amman - King Abdullah II Street Building No. 274 - ground floor

Website: [jor.buildingranks.com](http://jor.buildingranks.com)



**We Guarantee You the Safe Choice**